



NORTH CAROLINA  
*A better place to be®*

Maybe it's time to...

# Go Wild!

## Roanoke River Paddle Trail

getting wild has taken  
on a whole new meaning!

Finding uncrowded,  
peaceful getaways is  
always a challenge for  
outdoor enthusiasts.

The Roanoke River  
Paddle Trail now provides a  
way to explore one of the  
Southeast's great roadless  
wilderness areas — the  
lower Roanoke River  
floodplain. Come visit this  
undiscovered area where  
black bears amble through  
ancient swamps, river  
otters frolic on riverbanks,  
colorful songbirds trill from  
the treetops, and powerful  
bald eagles soar overhead.

[www.roanokeriverpartners.org](http://www.roanokeriverpartners.org)

How can I go wild on the  
Roanoke River Paddle Trail?

For more information about the paddle  
trail, including descriptions of the route  
and the platforms, maps, photos, and an  
online reservation form,

visit Roanoke River Partners at:

[www.roanokeriverpartners.org](http://www.roanokeriverpartners.org)

Or you can make reservations at

Roberson's Marina

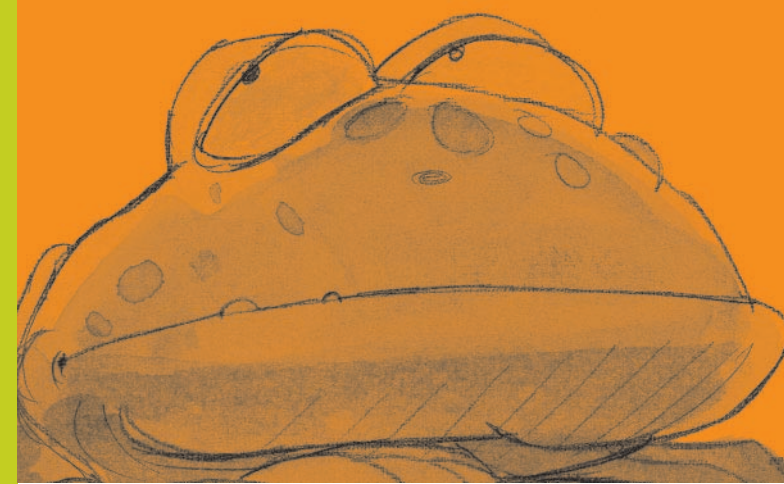
**252.792.3790**

For more information on Roanoke River  
Partners write to PO Box 488, Windsor,  
NC 27983-0488 or call

**252.798.3920**

E-mail: [director@roanokeriverpartners.org](mailto:director@roanokeriverpartners.org)

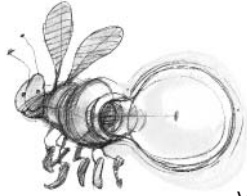
# Go Wild!



Lost touch with your **wild** side?

## What is the Roanoke River Paddle Trail?

This water-based trail gives paddlers in canoes and kayaks and people in small boats the opportunity to immerse themselves in one of eastern North America's most extensive, unfragmented areas of forested wetlands. The first paddle/camping trail of its kind in North Carolina, the trail is drawing comparisons to the famed canoe trails in Georgia's Okefenokee Swamp and Everglades National Park in Florida. More than 56,000 acres along the 137-mile lower Roanoke River corridor are protected in public and private nature preserves, including the Roanoke River National Wildlife Refuge. The Roanoke River Paddle Trail features innovative camping platforms that enable paddlers to arrange multi-day excursions in this vast swamp complex.



### Where is the Trail?

Located on the lower Roanoke River in northeastern North Carolina near the Virginia border, the paddle trail will eventually traverse more than 200 river miles between the towns of Roanoke Rapids and Plymouth, and on tributaries such as the Cashie River, which runs through the historic town of Windsor.

### Driving times to the Roanoke River Paddle Trail

- From Raleigh, NC **2 hours**
- From Washington, DC **5 hours**
- From Virginia Beach, VA **2 hours**

### What's so wild about the camping platforms?

The trail will eventually feature a variety of camping areas ranging from traditional campsites on the river's fast upstream sections, to elevated camping platforms in the swampy downstream sections. Each wooden camping platform provides a comfortable, spacious perch for up to six campers and their tents. Spaced at comfortable paddling distances, the platforms are tucked away in secluded natural habitats, such as majestic, untouched cypress swamps and ancient bottomland hardwood forests. Ten platforms have been constructed to date.



CARL GALIE

### Will I be wild about the paddling experience?

Absolutely! The Roanoke Paddle Trail appeals to all types of paddlers. Whitewater enthusiasts can tackle the Class II and Class III rapids located at the "fall line" between Roanoke Rapids and Weldon, where the Piedmont's rocky slopes drop off into the lowlands of the Coastal Plain. Paddlers interested in a more leisurely experience will enjoy exploring the tranquil streams in the lower stretches of the river and its tributaries.

### What kind of wildlife will I see on the Trail?

The lower Roanoke River floodplain is home to legendary wildlife populations, including thriving populations of wild turkey, black bear, river otter, bobcat, and white-tailed deer. The region's birdlife is phenomenal: 214 bird species have been documented here. The floodplain has been dubbed a "neotropical songbird factory" because it houses 44 species of neotropical migratory birds that winter in the Tropics and nest in North America.

### How much does it cost to camp on a platform?

- 1 camper - **\$20 per night**
- Between 2-6 campers - **\$10 per person per night**
- Unique double platform for large groups - **call for rates**

Groups of up to six people are welcome on each platform. Upon request, special permission for more campers may be granted. The group must meet special conditions and additional camping fees may be required.

### How long can I go wild on the Trail?

Boaters can currently arrange excursions ranging from a day trip to a multi-night camping trip.

### I like to paddle, but I'm not wild about camping. Can I still use the Trail?

Sure thing! The paddle trail runs through public waters that are open at any time. Since much of the land along the trail is privately owned, we recommend that daytrippers consider reserving one of the platforms for a day. You can use it as a pleasant spot to stretch your legs, have a picnic lunch, and soak up the swamp sights and sounds. Afterwards, you can spend the night in one of the area's many B&Bs or motels. While you are in the region you can enjoy Southern cuisine at its finest: barbecue, seafood, country ham, and sweet iced tea!

JEFF HORTON



# Go Wild!

[www.roanokeriverpartners.org](http://www.roanokeriverpartners.org)

252.798.3920

